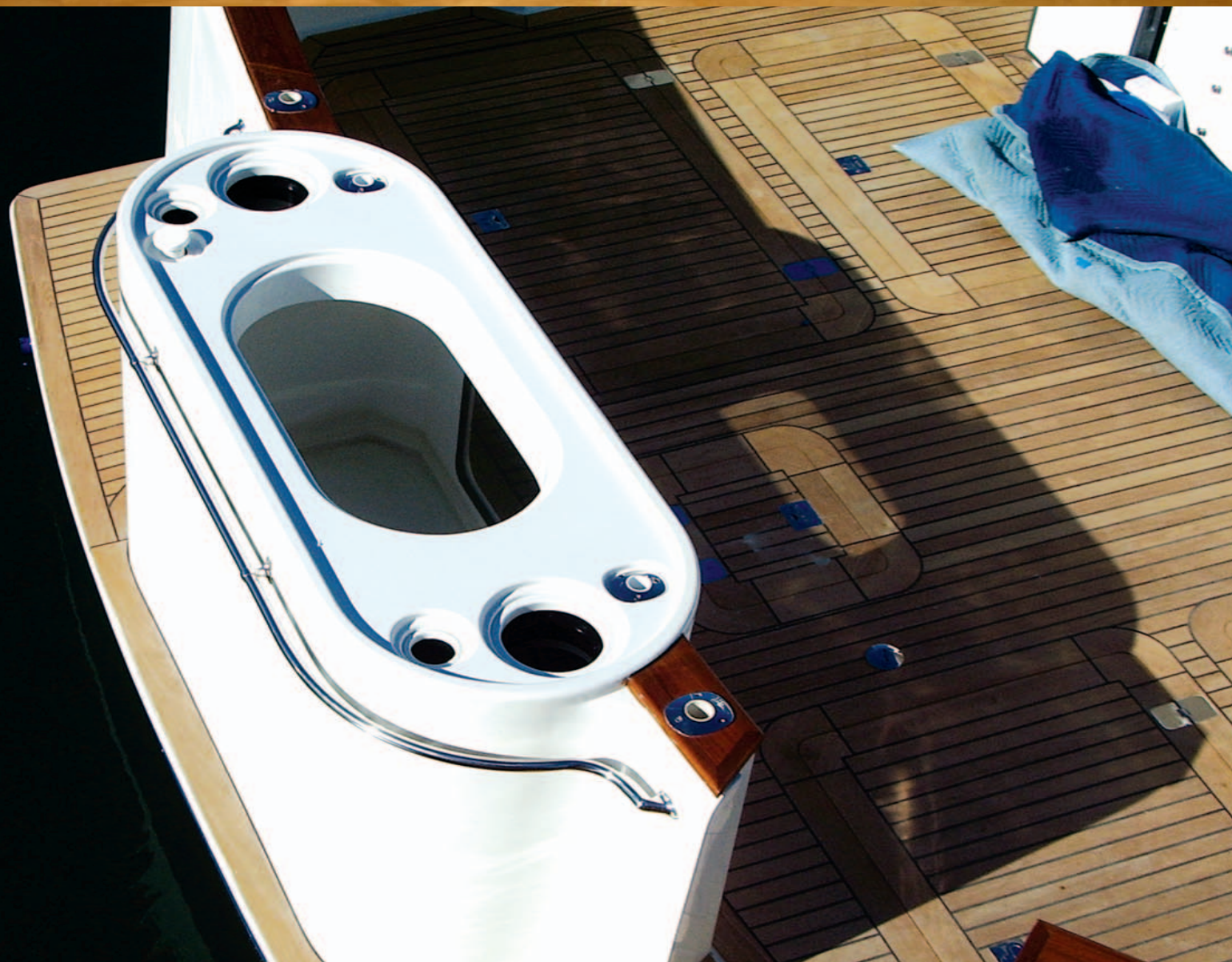


OFF SHORE

Marine Products

FIBERGLASS BAIT SYSTEMS



ABOUT OFFSHORE MARINE PRODUCTS

The key to bait systems is in the flow. Flow does not mean the speed of water it means the flow through the bait chamber. Contrary to belief, a bait system does not have to be round if the “flow system” is proper. Square, Rectangular, Oval or Round can all hold bait equally if the flow is proper in the tank. At Offshore Marine Products we build bait systems with un-matched “baffled flow chambers” throughout the tank. We have built bait systems for some of the finest six pack charter boats in California, like the “Bongos II”, “Bongos III”, “No Limits”, “Rampage”, “Kia Kai” to name a few. At Offshore Marine Products we take pride in the quality of the product we make and so will you. After all you will never second guess when you buy the best.



OVAL BAIT TANKS



Oval and oval Divided Tanks

Many believe the best shape for a bait tank is completely round. The debate over this will probably go on forever. However there are a couple of problems with this. The biggest is its room. Cockpits in a boat are square or rectangular. Place a large circle in the middle of a square or a rectangle and you will find it will eat up all of your fishing room in a hurry. Add a few deck hatches, chairs, or an engine box and all of sudden the size of the circle that will fit gets pretty small. Pinch that circle into an oval and you have a shape that maximizes capacity, fits between hatches, and leaves you room to fish.

Single Tanks vs. Divided Tanks

Divided tanks are a great way to separate baits or reduce the water weight you are carrying as you use your bait. However a single tank will always hold more bait than a divided tank of the same size. The reason is swimming room. Even though the tanks hold the same amount of water and are the same size on the outside you lose internal area to the divider, and a second set of baffles. Thus a single tank of the same size will have roughly 25% more room for bait. This is why the first size of divided tank we offer is the OS-65-OD. We feel the divided chambers in tanks smaller than the 65 gallon model are just too small and you lose too much capacity.

SQAURE AND RECTANGLE BAIT TANKS



OS32-S



OS65-S



OS43-LP



OS95-R



OS115-R



OS115-R with framed window

Square and Rectangular Tanks

We make square and rectangular tanks for one simple reason. Where they will fit on a boat. Some boats are limited in deck space or the owner may not want a tank in the center of their cockpit or on their swim step or the cockpit may be a little tight. Rectangular tanks are deeper but narrower than our ovals so in some cases this gains fishing or walk around room in the cockpit. Squares and rectangles fit up against bulkheads, in corners, or beside existing cabinets very well and they look like they belong there. Contrary to popular belief these tanks hold bait very well. Proper flow through the tank provides the bait with what they need, not shape. Square and rectangular shapes also allow us to build tackle centers and cabinets or in the case of divided tanks we can make bait tank/tackle center combinations.

BOW BAIT TANKS AND ACCESSORIES

OFFSHORE
Marine Products



OS20-OB



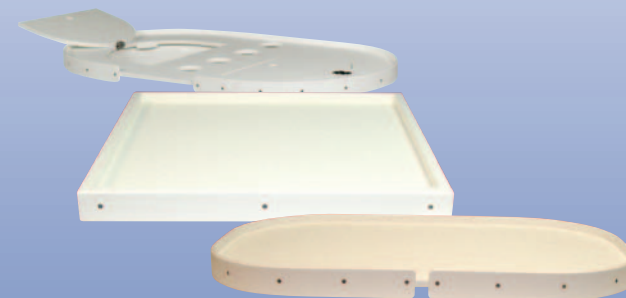
OS30-OB



OS65-OB



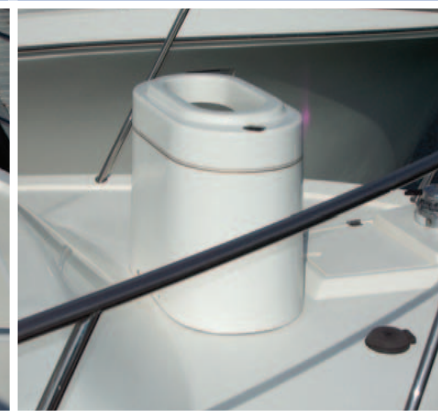
Bait Light



Bait lids come small, large, and large opening



There are three types of windows offered Framed, frame-less, and curved windows.



Bow Tanks

Offshore Marine Products offers several bow tank sizes. They generally come 18" tall, But can be made taller on request. They can be made shorter as well. In addition, bow tanks have a little taller false bottom to allow for scribing to a crowned deck.

Accessories

Offshore Marine Products offers a full line of accessories including Bait Lights, Rod Holders, Net Holders, Pumps, Through Hull Fittings, Valves, Mounting Hardware to make the tanks removable or to mount on swim platforms etc. If you have any questions please give us a call.

Offshore Marine Products has designed our products to be easily installed. However due to the nature of the marine environment and our commitment to safety we highly recommend that you seek professional assistance in installing our product. We also recommend that any work done below the water line be done by a qualified professional period.

CUSTOM BAIT TANKS

Simply put, if you don't see something you like or want a specific size we can build it.

Offshore Marine Products builds more and more custom tanks every year to give owners exactly what they want. Whether it is a BBQ center, tackle station/tank combination, a fish box, or a tank to fit a specific space in your boat we have the capability. We even make drop in liners to convert existing cabinets into bait tanks.



SPECIALTY BAIT TANKS

OFFSHORE
Marine Products



Bait Receiver



OSTT



600FC
with Fighting chair



OS30-OBT



Cabinet Insert



OS2-MT



Specialty Tanks and Tubes

Offshore Marine Products also offers several specialty tanks. We offer tanks designed to fit under and behind fighting chairs, mackerel and tuna tubes, bait tank/tuna tube combinations, and tackle center/bait tank combinations. Tuna and mackerel tubes are available as single tubes to be glassed into your boat or as a tank unit. The tuna tubes are available with an insert allowing you to reduce the size of the tube for smaller bait. The tube tanks are available with or without a plumbed drain. Traditionally tubes are allowed to just overflow. This is fine if they are hanging from a rail or a transom however if you want them on your bow or in the cockpit having a plumbed drain keeps things a whole lot dryer. We also offer a 100 gallon floating bait receiver so you can keep bait at your disposal.

Bait Tanks

Model #	Height	Width	Length	Approx. Gal	Description
OS20-O	24"	14.5"	24.5"	19	1 Scoop Oval
OS30-O	28"	16"	26"	30	2 Scoop
OS32-S	28"	20"	20"	32	2 Scoop Square
OS43-LP	21"	22"	38"	43	Lean Pad Seat
OS45-R	30"	20.5"	26"	45	3 Scoop Rectangular
OS45-O	30"	18.5"	28.5"	45	3 Scoop Oval
OS50-O	32"	21"	32"	50	30 1/4 Scoop Oval
OS55-O	32"	21"	36.5"	55	3 1/2 Scoop Oval
OS65-O	30"	21"	40"	65	4 Scoop Oval
OS65-OD	30"	21"	40"	65	4 Scoop Oval Divided
OS65-S	32"	24"	24"	65	4 Scoop Square
OS95-R	34"	25"	33"	95	6 Scoop Rectangular
OS95-OD	32"	25"	41.5"	95	6 Scoop Oval Divided
OS100-O	32"	25"	43.5"	100	6 Scoop Oval
OS115-O	34"	25"	46.5"	115	7 to 8 Scoop Oval
OS115-OD	34"	25"	46.5"	115	7 to 8 Scoop Oval Divided
OS115-R	34"	25"	41"	115	7 to 8 Scoop Rectangular
OS115-RD	34"	25"	41"	115	7 to 8 Scoop Rectangular Divided
OS170-OD	36"	30"	53"	170	10 Scoop Oval Divided
OS170-O	36"	30"	53"	170	10 Scoop Oval

Bow Tanks

OS20-OB	18"	14.5"	24.5"	14	Oval Bow Tank
OS30-OB	18"	16"	26"	18	Oval Bow Tank
OS32-SB	18"	20"	20"	18	Square Bow Tank
OS45-OB	18"	18.5"	28.5"	24	Oval Bow Tank
OS45-RB	18"	20.5"	26"	24	Rectangle Bow Tank
OS50-OB	18"	21"	32"	26	Oval Bow Tank
OS55-OB	18"	21"	35"	28	Oval Bow Tank
OS65-OB	20"	21"	40"	32	Oval Bow Tank
OS65-ODB	20"	21"	40"	32	Ovall Divded Bow Tank
OS95-ODB	21"	25"	41.5"	38	Ovall Divded Bow Tank

Specialty Tanks

OS600-FC	28"	33.25"	36"	60	Fighting Chair/Rocket Launcher Tank
OS30-OBT	18"	20.5"	26"	18	Oval Tank with 2 Mackerel Tubes
OSTT	30"	19"	34.5"	N/A	Tuna Tube Tank
OS2MT	18"	7.75"	15.75"	N/A	Mackerel Tube Tank
Bait Receiver	36"	36"	36"	N/A	Bait Receiver

Accessories

Bait Lights	Leaning Pad	Rod Holders
Bait Nets	Net Holders	Table Top
Custom Color Available	Pumps	Windows
Cutting Boards	Rigging Service	

Authorized Dealer

All bait tanks come in the following colors: white, off-white, riveria, cabo, parker, light gray, dark gray, other colors are also available.



711 West 17th Street Suite E-3, Costa Mesa, CA 92627 (949) 650-8800 www.offshoreproducts.com